

22 BISHOPSGATE

London, UK
EC2N 4BQ

COMMERCIAL
REAL ESTATE

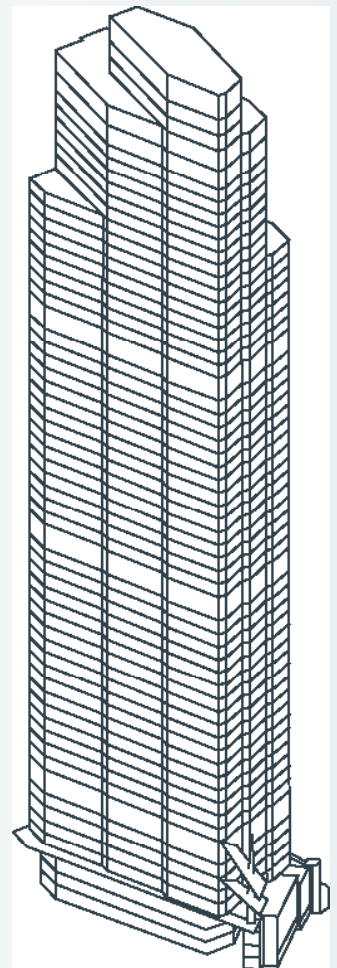


SYNOPSIS

ICONICS UK deploy their Intelligent Building Software Stack (IBSS), a state-of-the-art Digital Twin hosted in Azure, into one of London's most iconic office buildings – 22 Bishopsgate.

APPS DEPLOYED

22 Bishopsgate are using a combination of the IBSS Data Digital Twin and the IBSS OneLens FM Services Application.

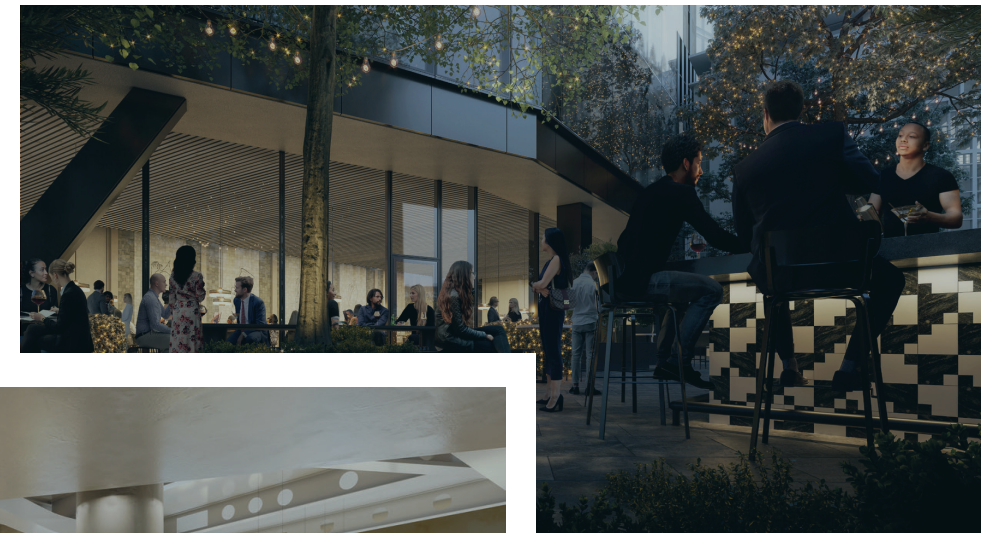




22 BISHOPSGATE

Located in the heart of London, Bishopsgate finds itself in a uniquely accessible location. To be able to access over ten tube stations within a 20-minute walk as well as five international airports within 60 minutes is impressive, even for London! Not only does the location exemplify connectivity and speed, the 1.375 million square feet of office space has been fitted-out with some of the smartest technology on the market; with mobile phone beacons on each of the office space levels, countless people-counting and environmental sensors distributed across the building, and occupant mobile apps that will connect to and control everything - the whole building is seamlessly 'connected' and ready to deliver unified digital experiences.

It's hard to imagine who wouldn't want to work in a building like this. The physical space will be the first of its kind to house a food market, innovation hub, gym, wellbeing retreat, active commuter park, restaurant and London's highest public viewing gallery. 22 Bishopsgate really has been designed to create inspiring, healthy and productive workspaces that attract the best talent – yes, over 12,000+ diverse occupants made up of some of the World's most successful brands and firms.



INTRODUCTION

Touted as one of the most technologically advanced buildings in the country, ICONICS UK are delighted to have played their part in future-proofing the Facilities Management (FM) services, sustainability governance and asset monitoring capabilities of this archetypal building.

The system itself is monitoring tens-of-thousands-of data points in real-time - from a variety of different systems and sensors – in order to predict equipment breakdown

and energy loss before it happens. The 22 Bishopsgate Engineering Department will use the IBSS platform to transform the way they manage the building and its facilities. The entire 62-storey building now has a digital twin, and it's this system that is ready to ensure that the building runs sustainably - whilst keeping its future tenants productive, healthy and happy.



ENERGY ANALYTICS



SYSTEM FAULT SUMMARY

THE SYSTEM

Based primarily on the IBSS Hard FM Services application, ICONICS UK have delivered an Azure cloud-based Digital Twin that collects data from almost every meter and sensor in the building and runs operational analytics on top of that data model. The platform is orchestrating over 90,000 real-time data points from mechanical systems such as heating, cooling and ventilation – and transforming that data into supercharged

insight and actionable intelligence. On the ground, the 22 Bishopsgate Engineering Department, -and their skilled team of engineers, technicians and analysts - will use the visual and auto-generated outputs of the IBSS platform to advance the engineering services they will deliver to the building.

CUSTOMER QUOTE

“BASED ON WHAT WE’VE SEEN SO FAR, THE IBSS SYSTEM FROM ICONICS WILL NOT ONLY ALLOW OUR TEAM TO PRE-EMPTIVELY FIX THE RIGHT ISSUES AT THE RIGHT TIME, BUT IT WILL ENABLE US TO DO THIS BASED ON THE QUANTIFIABLE IMPACT UNFIXED FAULTS WILL HAVE ON BUILDING PERFORMANCE AND OCCUPANT COMFORT.

THE COMBINATION OF CLOUD-BASED AI TECHNOLOGY AND OUR ENGINEERING-PROWESS, WILL ENSURE THAT THIS GREAT BUILDING IS TUNED TO DESIGN-LEVEL STANDARDS, FOR A LONG TIME TO COME”.

PETER BICKNELL, HEAD OF
ENGINEERING FOR 22 BISHOPSGATE





THIS IS JUST THE BEGINNING

It's too early to tell the exact impact the IBSS Digital Twin will have on 22 Bishopsgate, or what comes next. For now, the operational twin will form the backbone of 22 Bishopsgate's FM, energy optimisation and asset maintenance engineering services, and there is already talk of incorporating new mechanical systems into the cloud platform to drive further savings and opportunities.

Likewise, as more tenants move in and occupy their respective levels and spaces, it will be up to those individual organisations to choose their preferred technology vendor to deliver digital workplace solutions. ICONICS UK are excited to already be helping a number of those tenants achieve a variety of people-focused use cases such as room booking, wayfinding, space control, occupant mobile apps, digital signage kiosks and much more.